

# SBA200

## USB-RS485 Converter USERS' GUIDE



### DEVICE DESCRIPTION

SBA200 is used to convert RS485 signals that is widely used in industry to USB interface. It has USB1.1 and 2.0 compability, auto baud rate and direction flow detection, isolation and ESD protection features.

After installing the device driver, a virtual port is created and serial communication over RS485 network is done over this port.

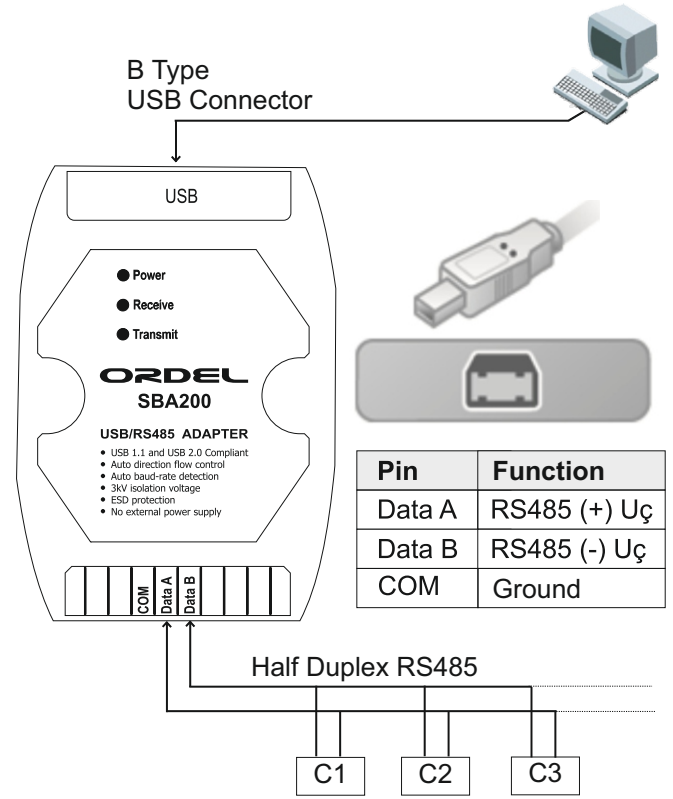
### WARNINGS

- Before using the device, please read the warnings below and this guide carefully. The accidents or damages resulting from not following the warnings included in this guide are under user's responsibility.
- Do not use the device at places where corrosive, flammable and explosive gases exist. Contact points may create electrical discharge and this may cause explosion or fire.
- Do not allow metal fragments or lead wire scraps or liquid matters to fall inside this device. Otherwise fire or electrical shck may happen.
- Take the necessary precautions in order to prevent accidents and damages that may result in case the device gets faulty.
- Never disassemble, repair and modify the device. These should be carried out by authorized service.

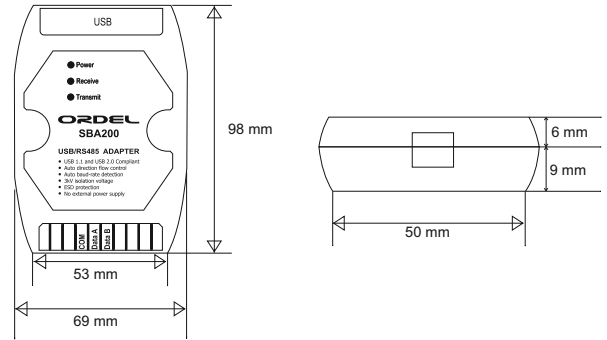
### TECHNICAL SPECIFICATIONS

User friendly  
USB1.1 and 2.0 Compatible  
300.3M Baud Communication speed  
Auto direction flow control  
Auto baud-rate detection  
3kV isolation voltage  
ESD Protection  
No external power supply  
Power, receive and transmit leds

### CONNECTION



### DIMENSIONS



### DRIVER INSTALLATION and USAGE

- After connecting device, operating system informs user that a new device is founded.
- If you cannot see this message, check the connection and be sure that the USB port is undamaged.
- After showing message for new device, operating system will need the drivers. Select the CD installation option from open form.
- Drivers are in SBDrivers folder in CD. Select the suitable folder.
- Installation has two step. One is for the virtual port, and the other is for direct access (You can see the installed device in both Universal Serial Bus and Communication Ports Sections)
- After installing both two driver, you can see the port number in Device Manager.

If any problem happens about the device drivers, by following the instructions below, you can completely remove the drivers and reinstall again.

- While the USB device is connected, Right click the USB serial converter in Universal Serial Bus Controller in Device Manager. Then select the delete option and delete the device.
- Delete the "ftbusui.dll , ftd2xx.dll , FTLang.dll and ftserui2.dll " files in C:\Windows\System32 folder and " ftdibus.sys ve ftser2k.sys files in C:\Windows\System32\drivers folder.(If files are not visible, change your folder view preferences)
- While in Device Manager, click Refresh button or "F5" and scan the computer for new devices. Reinstall the drivers from driver CD.
- After installing the device successfully, a new serial port is assigned to the device.

NOTE: Deleting another file different from the files mentioned above may create system faults.