

Kelepçeli Kafa Tipi LCD Göstergeli Sıcaklık Dönüştürücü



LPI20

LPI20 Model converters are industrial devices for temperature measurement in pipe applications in industrial environments and that convert this information with a standard two-wire 4-20mA analog signal. Process value can be monitored with the LCD indicator on it. Thermocouple and resistance thermometer type sensors can be connected to this device.

These devices are microprocessor based. SBA100 can be configured and used very easily on a computer with a USB-UART converter.

Device Features

- 1 pcs Sensor Input (TC, RT)
- 1 pcs Analog Output (4-20mA)
- 1 pcs Semiconductor Relay Output
- 1 pcs 3½ LCD Display
- Configuration via Computer

- 24V DC Supply
- Two-Wire Connection

- Structure Designed For Pipe Applications
- According to Wide Range of Kinds of pipe Sizes
- Surface Contact Spring Sensor Design
- Sensor Maintenance without Shutting Down the System
- Measuring Range -50...+300°C
- Single or Double Element Sensor Selection
- Selection of components and equipment should be performed by the receiver.

Input Types

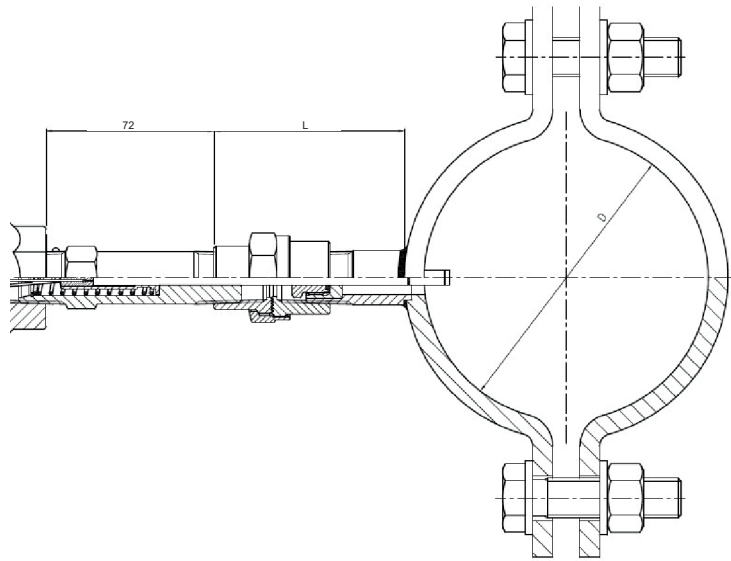
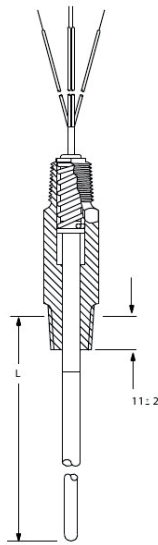
Sensor Type	Standard	Min.	Max.
Type-T (Cu-Const)	IEC60584	-200 °C	300 °C
Type-U (Cu-Const)	IEC60584	-200 °C	600 °C
Type-J (Fe-Const)	IEC60584	-200 °C	800 °C
Type-L (Fe-Const)	IEC60584	-200 °C	900 °C
Type-K (NiCr-Ni)	IEC60584	-200 °C	1200 °C
Type-E (Cr-Const)	IEC60584	-200 °C	1200 °C
Type-N (Nicrosil-Nisil)	IEC60584	0 °C	1200 °C
Type-S (Pt%10Rh-Pt)	IEC60584	0 °C	1500 °C
Type-R (Pt%13Rh-Pt)	IEC60584	0 °C	1600 °C
Type-B (Pt%18Rh-Pt)	IEC60584	0 °C	1800 °C
Pt-100	DIN 43760	-200 °C	850 °C

Technical Specifications	
Power Supply (PS)	10-35 VDC
Input	Thermocouple = B, E, J, K, L, N, R, S, T, U Resistance Thermometer = Pt-100
Thermocouple Input Impedance	10MΩ
Analog Output	Current = 0/4-20mA , 20-4mA
Relay Output	250V, 80mA, NO Contact
Memory	100 Years, 100.000 Renewals
Accuracy	+/- 0,2%
Sampling Time	100 ms
Environment Temperature	Working = -20...+70°C Storage = -40...+85°C

Sensor Technical Specifications

2

LPI15 Display



Product Code

LPI20 - /

Element Type : _____
 A = A Class Pt-100
 B = B Class Pt-100

Clamp Diameter : _____
 1 = Between 100....200mm
 2 = Between 200....300mm
 3 = Between 300....500mm